

Luminaire with a higher protection rating - Opal diffuser - direct distribution - impact-proof

Housing made of glass-fibre reinforced polyester, with PUR foam age-resistant sealing in the surrounding edge, stainless steel diffuser clips, device mount made of sheet steel painted white. Housing colour light grey; Light distribution direct distribution by means of Opal diffuser of Polycarbonate, deep-drawn polycarbonate diffuser with opal, smooth surface, UGR (4H/8H) 24.6. Integrated driver. Electrical connection via 5-pole connection terminal with plug-in contacts.. Swivel mounting bracket SBB to be ordered separately.

**CHARACTERISTICS**

Order number	56612026670
EAN number	4020863340972
Commodity code	94051140
Certification mark	IP 65, Protection class I, F, D, HACCP DIN10500/Food/IFS/BRC, Indoor, CE
Impact resistance (IK rating)	IK03 (-20°C), IK06 (35°C)
Ambient temperatur	ta -20°C to 35°C
Special properties	Ready for IoT
Warranty period	5 years
State funding programs	BEG - Federal funding for efficient buildings (valid only for Germany)

**ELECTRICAL ENGINEERING**

Controller	Electronic driver DALI2 (1 pcs.)
System output	31W
Mains voltage	230V/50Hz
Circuit breakers (inrush current)	14 pieces/B10, 23 pieces/B16, 23 pieces/C10, 38 pieces/C16
Energy efficiency class/light source	C

**LIGHTING TECHNOLOGY**

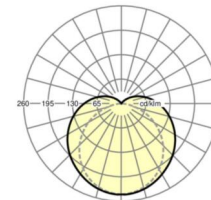
Placement	LED, Colour rendering/Light colour CRI ≥ 80 / 4000K
Colour tolerance (MacAdam)	3SDCM
Photobiological safety (Luminaire)	RG0
Nominal luminous flux	4039lm
LED service life	50000h L80/B10 (Tq 35°C)
Luminaire luminous efficiency	130lm/W
UGR lat./long.	24.6 / 21.3

**MECHANICS**

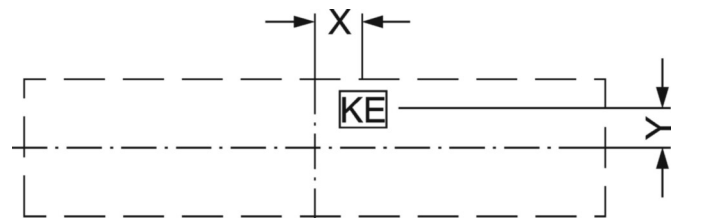
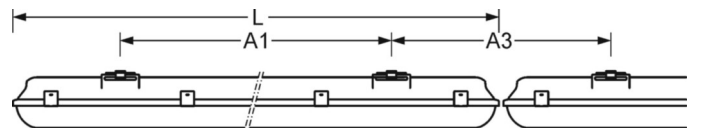
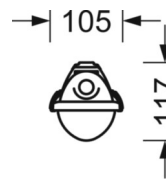
Housing colour	light grey
Dimensions (LxWxH/DxH)	1300mm x 105mm x 117mm
Weight (net)	2kg
Cable entry KE (X/Y)	650mm/0mm
Type of installation	Ceiling-mounted single installation, Pendant individual mounting, Wall mounting, Pendulum mounting rail assembly on chain, Ceiling-mounted mounting rail installation

**DEEP-LINK**

<https://www.regiolux.de/en/article/56612026670>



Reference	LED 3900lm 840
ηLB	100 %
Φ ↓/↑	87 % / 13 %
UGR lat./long.	24.6 / 21.3



## Dimensions

---

L	1300 mm	Length
B	105 mm	Width
H	117 mm	Height
A1	800 mm	Mounting distance single mounting
A3	505 mm	Mounting distance between luminaires in a light run arrangement
X	650 mm	Distance cable infeed to the center of the luminaire on the X-axis
Y	0 mm	Distance cable infeed to the center of the luminaire on the Y-axis

---